

[illegible]

Consultants	
Access Consultant Funktion	T 612 9011 8128
Acoustic Consultant Acoustic Logic	T 612 8339-8009
BCA Consultant Blackett Maguire and Goldsmith	T 612 9211 7777
Civil Engineering Northrop Consulting Engineers	T 612 9634 6033
Cost Consultant Altus Page Kirkland	T 612 9283 7311
Fire Engineering Defire	T 612 9211 4333
Heritage Consultant City Plan Heritage	T 612 8270 3530
Hydraulics Engineer ACOR	T 612 9438 5098
Landscape Architect SITE IMAGE	T 612 4226 3333
Planner City Plan Services	T 612 8270 3500
Services Engineer Services 4 Buildings Pty Ltd	T 612 9089 8866
Structural Engineer Northrop Consulting Engineers	T 612 4226 3333
Traffic Engineer Varga Traffic Planning	T 612 4226 3333
Waste Consultant Waste Audit and Consultancy Services	T 612 9818 8267

**PTW Architects**

Level 13, 9 Castlereagh St  
Sydney NSW Australia 2000

**PTW**

T +612 9232 5877  
F +612 9221 4139

*NSW Nominated Architects*  
*A Anderssons AO Architects No. 2822*  
*J Blimton Architects No. 2816*  
*D Jones Architects No. 4778*  
*A Rossi Architects No. 5057*  
*S Stinton Architects No. 6599*

Title: SITE PLAN



[illegible]

Consultants	
Access Consultant Funktion	T 612 9011 8128
Acoustic Consultant Acoustic Logic	T 612 8339-8009
BCA Consultant Blackett Maguire and Goldsmith	T 612 9211 7777
Civil Engineering Northrop Consulting Engineers	T 612 9634 6033
Cost Consultant Altus Page Kirkland	T 612 9283 7311
Fire Engineering Defire	T 612 9211 4333
Heritage Consultant City Plan Heritage	T 612 8270 3530
Hydraulics Engineer ACOR	T 612 9438 5098
Landscape Architect SITE IMAGE	T 612 4226 3333
Planner City Plan Services	T 612 8270 3500
Services Engineer Services 4 Buildings Pty Ltd	T 612 9089 8866
Structural Engineer Northrop Consulting Engineers	T 612 4226 3333
Traffic Engineer Varga Traffic Planning	T 612 4226 3333
Waste Consultant Waste Audit and Consultancy Services	T 612 9818 8267

**PTW Architects**

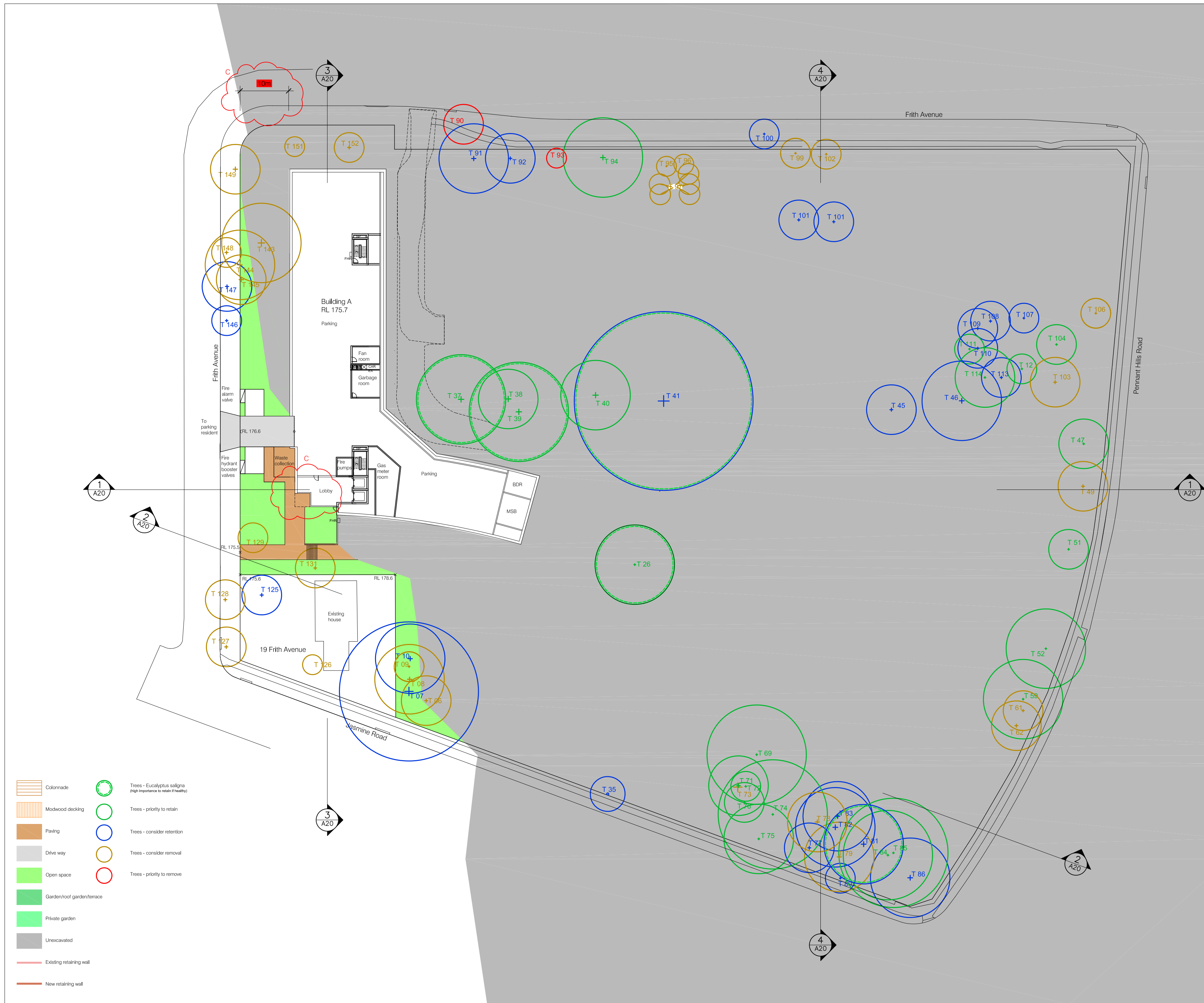
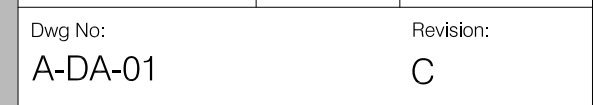
Level 13, 9 Castlereagh St  
Sydney NSW Australia 2000

**PTW**

T +612 9232 5877  
F +612 9221 4139

NSW Nominated Architects  
A Andersons AO Architects No. 2822  
J Blimmon Architects No. 3916  
D Jones Architects No. 4778  
A Rossi Architects No. 5057  
S Stinton Architects No. 6599

Title:  
LEVEL 1 PLAN  
RL 175.7





[illegible]

Consultants	
Access Consultant Funktion	T 612 9011 8128
Acoustic Consultant Acoustic Logic	T 612 8339-8009
BCA Consultant Blackett Maguire and Goldsmith	T 612 9211 7777
Civil Engineering Northrop Consulting Engineers	T 612 9634 6033
Cost Consultant Altus Page Kirkland	T 612 9283 7311
Fire Engineering Defire	T 612 9211 4333
Heritage Consultant City Plan Heritage	T 612 8270 3530
Hydraulics Engineer ACOR	T 612 9438 5098
Landscape Architect SITE IMAGE	T 612 4226 3333
Planner City Plan Services	T 612 8270 3500
Services Engineer Services 4 Buildings Pty Ltd	T 612 9089 8866
Structural Engineer Northrop Consulting Engineers	T 612 4226 3333
Traffic Engineer Varga Traffic Planning	T 612 4226 3333
Waste Consultant Waste Audit and Consultancy Services	T 612 9818 8267

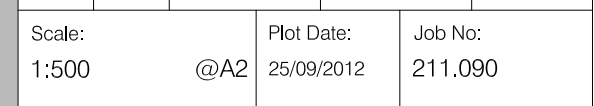
PTW Architects

Level 13, 9 Castlereagh St  
Sydney NSW Australia 2000

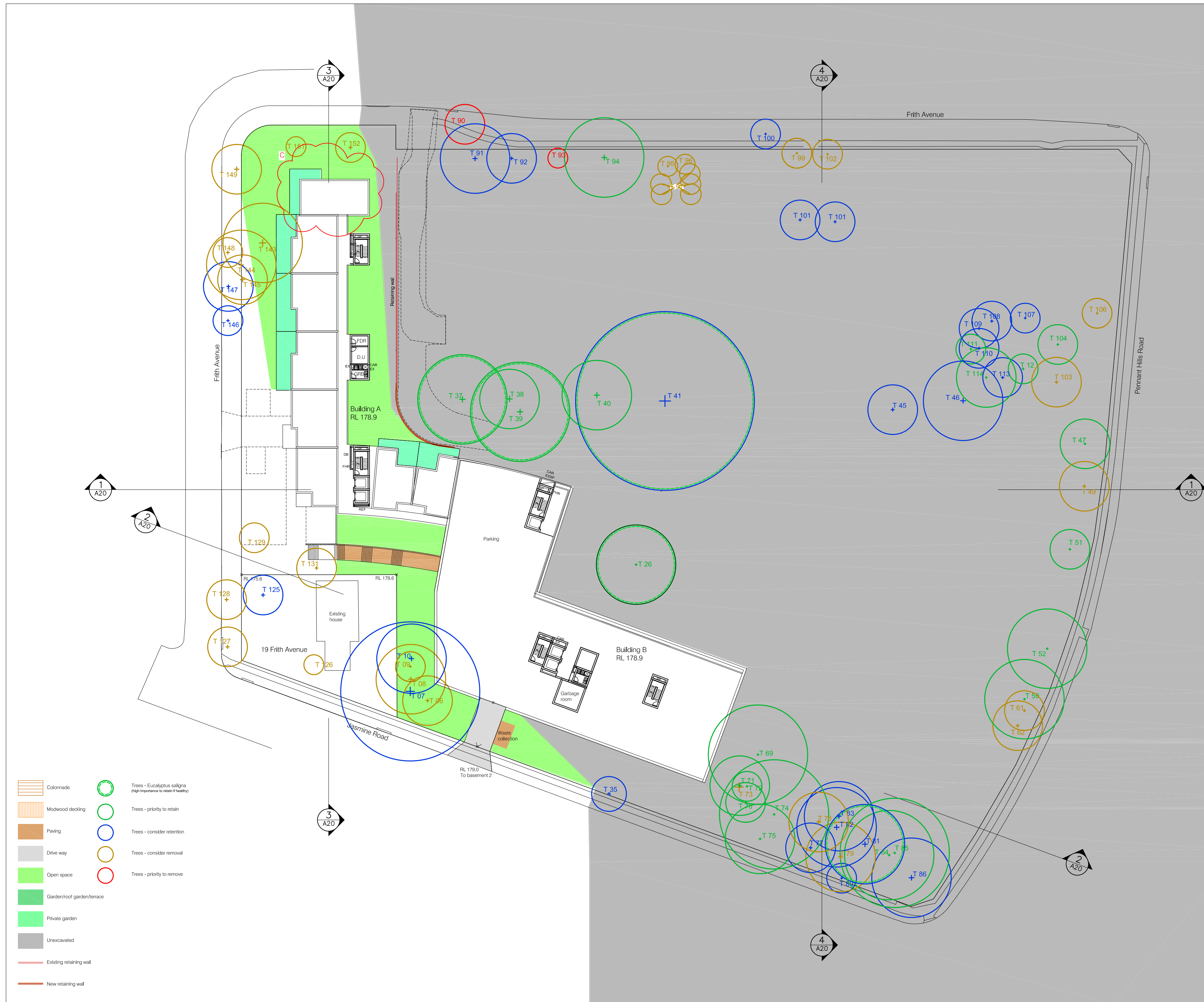
**PTW**

T +612 9232 5877  
F +612 9221 4139

Project:  
**BOWDEN BRAE VILLAGE**  
40-50 Pennant Hills Road  
Normanhurst NSW 2076



Status: DA SUBMISSION







Do not scale from drawings. Verify all dimensions on site before commencing work.  
Copying or reproduction of this drawing is strictly prohibited without the consent of  
Peddie Thorp & Walker P/L.  
The Architect shall not be liable for any loss or claims whatsoever arising from or in  
respect of any errors, omissions or resulting from data however transferred from the  
computer system of the Architect to systems of the Client or other Consultants.  
The recipient of the data shall be responsible for checking accuracy and completeness of  
data received. Any use of the electronic data in part or whole shall be at the users risk.  
The CAD files and their contents are solely representations of the Project Information  
and cannot be relied upon beyond the representation shown on the PDF versions of  
the drawings as provided by the Architect.

No:	Amendment:	Chk:	Date:
A	FOR REVIEW		25/05/2012
A	DA SUBMISSION		31/05/2012
B	DA SUBMISSION		03/09/2012
C	REVISED DA SUBMISSION		25/09/2012

#### INDICATIVE INTERNAL LAYOUT ONLY

Consultants	
Access Consultant Funktion	T 612 9011 8128
Acoustic Consultant Acoustic Logic	T 612 8339-8009
BCA Consultant Blackett Maguire and Goldsmith	T 612 9211 7777
Civil Engineering Northrop Consulting Engineers	T 612 9634 6033
Cost Consultant Altus Page Kirkland	T 612 9283 7311
Fire Engineering Defire	T 612 9211 4333
Heritage Consultant City Plan Heritage	T 612 8270 3530
Hydraulics Engineer ACOR	T 612 9438 5098
Landscape Architect SITE IMAGE	T 612 4226 3333
Planner City Plan Services	T 612 8270 3500
Services Engineer Services 4 Buildings Pty Ltd	T 612 9089 8866
Structural Engineer Northrop Consulting Engineers	T 612 4226 3333
Traffic Engineer Varga Traffic Planning	T 612 4226 3333
Waste Consultant Waste Audit and Consultancy Services	T 612 9818 8267

Client:  
UnitingCare Ageing NSW,ACT  
Level 4-222 Pitt St, Sydney, NSW

**PTW Architects**  
Level 13, 9 Castlereagh St  
Sydney NSW Australia 2000  
T +612 9232 5877  
F +612 9221 4139  
NSW Nominated Architects  
A Andersons AO Architects No. 2822  
J Bilmon Architects No. 3916  
D Jones Architects No. 4778  
A Ross Architects No. 5057  
S Stinton Architects No. 6599

**Project:**  
**BOWDEN BRAE VILLAGE**  
40-50 Pennant Hills Road  
Normanhurst NSW 2076

**Title:**  
**LEVEL 4 PLAN**  
**RL 185.3**

0	5	10	20	30m
Scale: 1:500	Plot Date: 25/09/2012	Job No: 211.090		

Dwg No:  
**A-DA-04**

Revision:  
**C**

Status:  
**DA SUBMISSION**







Do not scale from drawings. Verify all dimensions on site before commencing work. Copying or reproduction of this drawing is strictly prohibited without the consent of PTW Architects Pty Ltd. The Architect shall not be liable for any loss or claims whatsoever arising from or in respect of any errors, omissions or resulting from data however transferred from the computer system of the Architect to systems of the Client or other Consultants. The recipient of the data shall be responsible for checking accuracy and completeness of data received. Any use of the electronic data in part or whole shall be at the users risk. The CAD files and their contents are solely representations of the Project Information and cannot be relied upon beyond the representation shown on the PDF versions of the drawings as provided by the Architect.

No:	Amendment:	Chk:	Date:
A	FOR REVIEW		25/05/2012
A	DA SUBMISSION		31/05/2012
B	REVISED DA SUBMISSION		03/09/2012
C	REVISED DA SUBMISSION		25/09/2012

#### INDICATIVE INTERNAL LAYOUT ONLY

Consultants	
Access Consultant Funktion	T 612 9011 8128
Acoustic Consultant Acoustic Logic	T 612 8339-8009
BCA Consultant Blackett Maguire and Goldsmith	T 612 9211 7777
Civil Engineering Northrop Consulting Engineers	T 612 9634 6033
Cost Consultant Altus Page Kirkland	T 612 9283 7311
Fire Engineering Defire	T 612 9211 4333
Heritage Consultant City Plan Heritage	T 612 8270 3530
Hydraulics Engineer ACOR	T 612 9438 5098
Landscape Architect SITE IMAGE	T 612 4226 3333
Planner City Plan Services	T 612 8270 3500
Services Engineer Services 4 Buildings Pty Ltd	T 612 9089 8866
Structural Engineer Northrop Consulting Engineers	T 612 4226 3333
Traffic Engineer Varga Traffic Planning	T 612 4226 3333
Waste Consultant Waste Audit and Consultancy Services	T 612 9818 8267

Client:  
UnitingCare Ageing NSW,ACT  
Level 4-222 Pitt St, Sydney, NSW

**PTW Architects**  
Level 13, 9 Castlereagh St  
Sydney NSW Australia 2000  
T +612 9232 5877  
F +612 9221 4139  
NSW Nominated Architects  
A Andersons AO Architects No. 2822  
J Billton Architects No. 3916  
D Jones Architects No. 4778  
A Rossel Architects No. 5057  
S Stinton Architects No. 6599

Project:  
**BOWDEN BRAE VILLAGE**  
40-50 Pennant Hills Road  
Normanhurst NSW 2076

Title:  
**LEVEL 5 PLAN**  
RL 188.5(Bld. A&B)  
RL 191.3(Bld. C) RL 190.2(Bld. D)

0	5	10	20	30m
Scale:	1:500	@A2	Plot Date:	25/09/2012
			Job No:	211.090

Dwg No:	Revision:
A-DA-05	C

Status:  
DA SUBMISSION









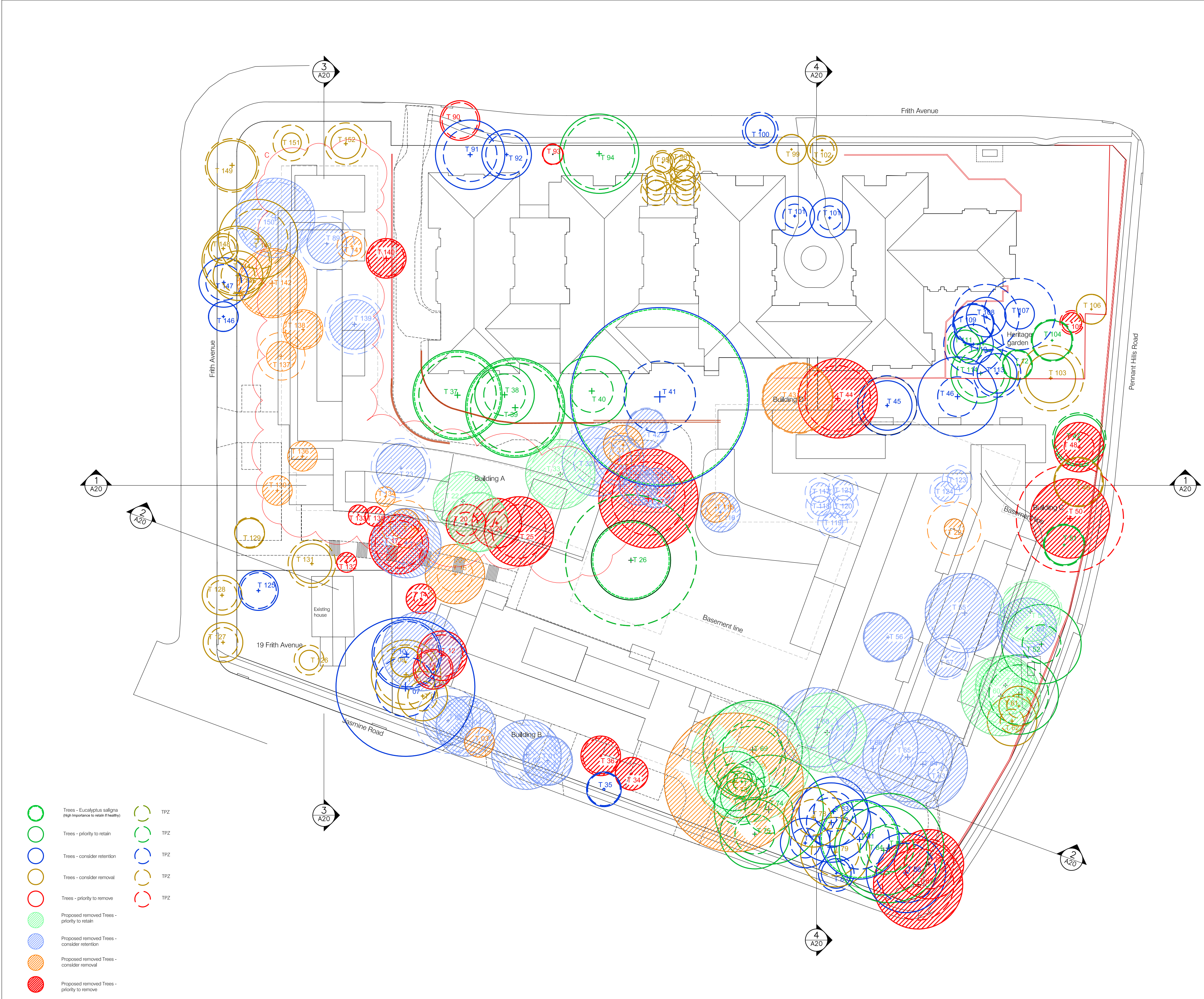












Do not scale from drawings. Verify all dimensions on site before commencing work.  
Copying or reproduction of this drawing is strictly prohibited without the consent of  
Peddie Thorp & Walker P/L.  
The Architect shall not be liable for any loss or claims whatsoever arising from or in  
respect of any errors existing or resulting from data however transferred from the  
computer system of the Architect to systems of the Client or other Consultants.  
The recipient of the data shall be responsible for checking accuracy and completeness of  
data received. Any use of the electronic data in part or whole shall be at the users risk.  
The CAD files and their contents are solely representations of the Project Information  
and cannot be relied upon beyond the representation shown on the PDF versions of  
the drawings as provided by the Architect.

No:	Amendment:	Chk:	Date:
A	DA SUBMISSION		31/05/2012
B	REVISED DA SUBMISSION		03/09/2012
C	REVISED DA SUBMISSION		25/09/2012

INDICATIVE INTERNAL LAYOUT ONLY

Consultants

Access Consultant	
Funktion	T 612 9011 8128
Acoustic Consultant	
Acoustic Logic	T 612 8339-8009
BCA Consultant	
Blackett Maguire and Goldsmith	T 612 9211 7777
Civil Engineering	
Northrop Consulting Engineers	T 612 9634 6033
Cost Consultant	
Altus Page Kirkland	T 612 9283 7311
Fire Engineering	
Defire	T 612 9211 4333
Heritage Consultant	
City Plan Heritage	T 612 8270 3530
Hydraulics Engineer	
ACOR	T 612 9438 5098
Landscape Architect	
SITE IMAGE	T 612 4226 3333
Planner	
City Plan Services	T 612 8270 3500
Services Engineer	
Services 4 Buildings Pty Ltd	T 612 9089 8866
Structural Engineer	
Northrop Consulting Engineers	T 612 4226 3333
Traffic Engineer	
Varga Traffic Planning	T 612 4226 3333
Waste Consultant	
Waste Audit and Consultancy Services	T 612 9818 8267

Client:

UnitingCare Ageing NSW/ACT  
Level 4-222 Pitt St, Sydney, NSW

PTW Architects

Level 13, 9 Castlereagh St  
Sydney NSW Australia 2000

T +612 9232 5877  
F +612 9221 4139

NSW Nominated Architects  
A Andersons AO Architects No. 2822  
J Blinton Architects No. 3916  
D Jones Architects No. 4778  
A Rossi Architects No. 5057  
S Sinton Architects No. 6599

Project:

BOWDEN BRAE VILLAGE  
40-50 Pennant Hills Road  
Normanhurst NSW 2076

Title:

TREE ASSESSMENT  
PLAN

05102030m

Scale:

1:500

@A2

Plot Date:

25/09/2012

Job No:

211.090

Dwg No:

A-DA-PS-07

Revision:

C

Status:

DA SUBMISSION



